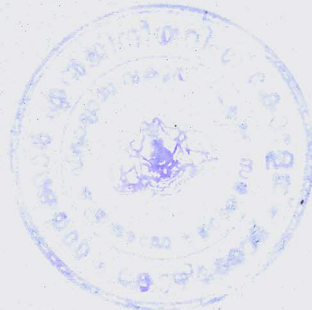



GOVERNMENT ENGINEERING COLLEGE, KOZHIKODE

LIST OF FURNITURE USING TREATED RUBBER WOOD/ RUBWOOD FOR VARIOUS DEPARTMENTS

Sl No	Items	Quantity					Total	Remarks
		ME	AE&I	CHE	Civil	Applied Science		
1	Computer table without top, Rub wood 1060 mm L X 550 mm W X 780 mm H		20				20	
2	Wooden chair with arm - Colonial 590 AH x 580 W x 900 BH	7	20				27	
3	Podium - 1160 Hx 550 W x 550 D	1					1	
7	Executive chair - 590 AH x 590 W x 1000 BH			13			13	
4	Shelf Big - 1900 H x 1000 W x 450 D	2		2	2		6	
5	Conference table Standard (Rate / Seat) - 15 seater - 610 L x 500 W x 760 H			1			1	
6	Senior Executive chair - 590 AH x 590 W x 1050 BH			2	1		3	
8	Executive table - 1830 L x 910 W x 760 H			1	2		3	
9	Computer table - Small - Home Nest 780 L x 480 W x 760 H			2	1		3	
10	Executive visitors chair - 590 AH x 580 W x 950 BH			3	14		17	
11	Partition - Partition - wood - glass - wood 2440 L x 2440 W x 60 D- Chemical Engg.	for two faculty room 1.22m height					37.5	

Rupees Seven lakh thirty seven thousand two hundred and sixty only




 PRINCIPAL
